

ant door lock in the 17th century of the "Mauritshuis",  
er castles in Holland. Lips' collection



















System 7/0m original  
German system  
Germany 3/1980





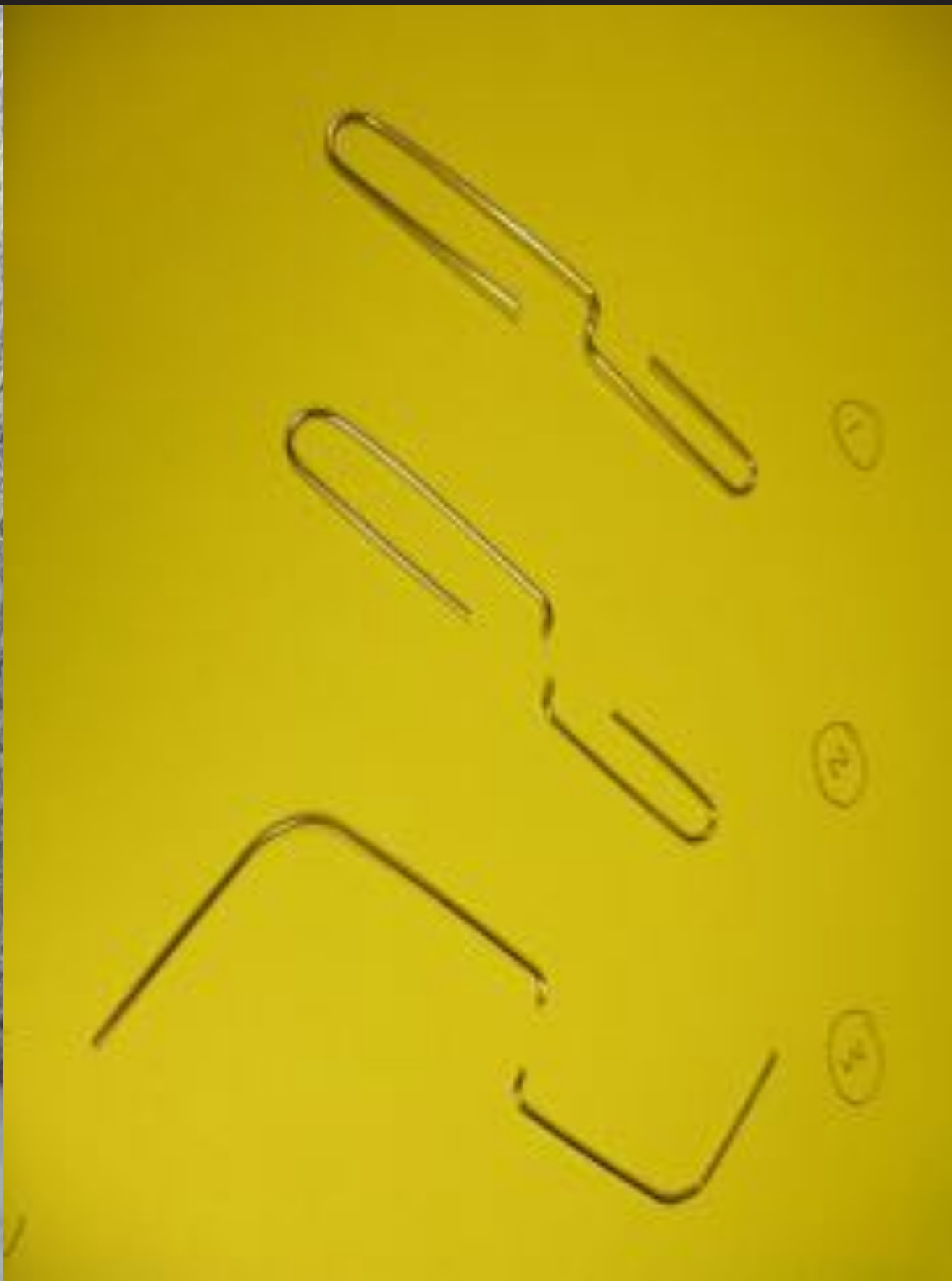








































**Priority**  
for perso

































of the gate of a palace...  
of importance was attached to these keys... the signs of authority  
and were carried on the shoulder. . . ."  
Wooden locks were also used in other Near East countries. They still are  
not uncommon in Morocco, in the Congo, in the East Indies, in the Malayan



Above and below: Coptic keys  
12 in. long.  
Opposite: Roman keys and  
bronze. Ca. 2nd century. Jo  
York.





...all of these are  
...usually favored by  
...in the late  
...a hand-spring  
...or slide  
...in two parts  
...when found  
...when found  
...locks are  
...ground for  
...succeeding period  
...locks  
...steel, and, of  
...locks were  
...while the h  
...in certain t



a, b, c, d. Door believed to be from a structure  
time of Xerxes I (486-405 B.C.); now used on  
of Baban and Mosul in Hamadan, of the















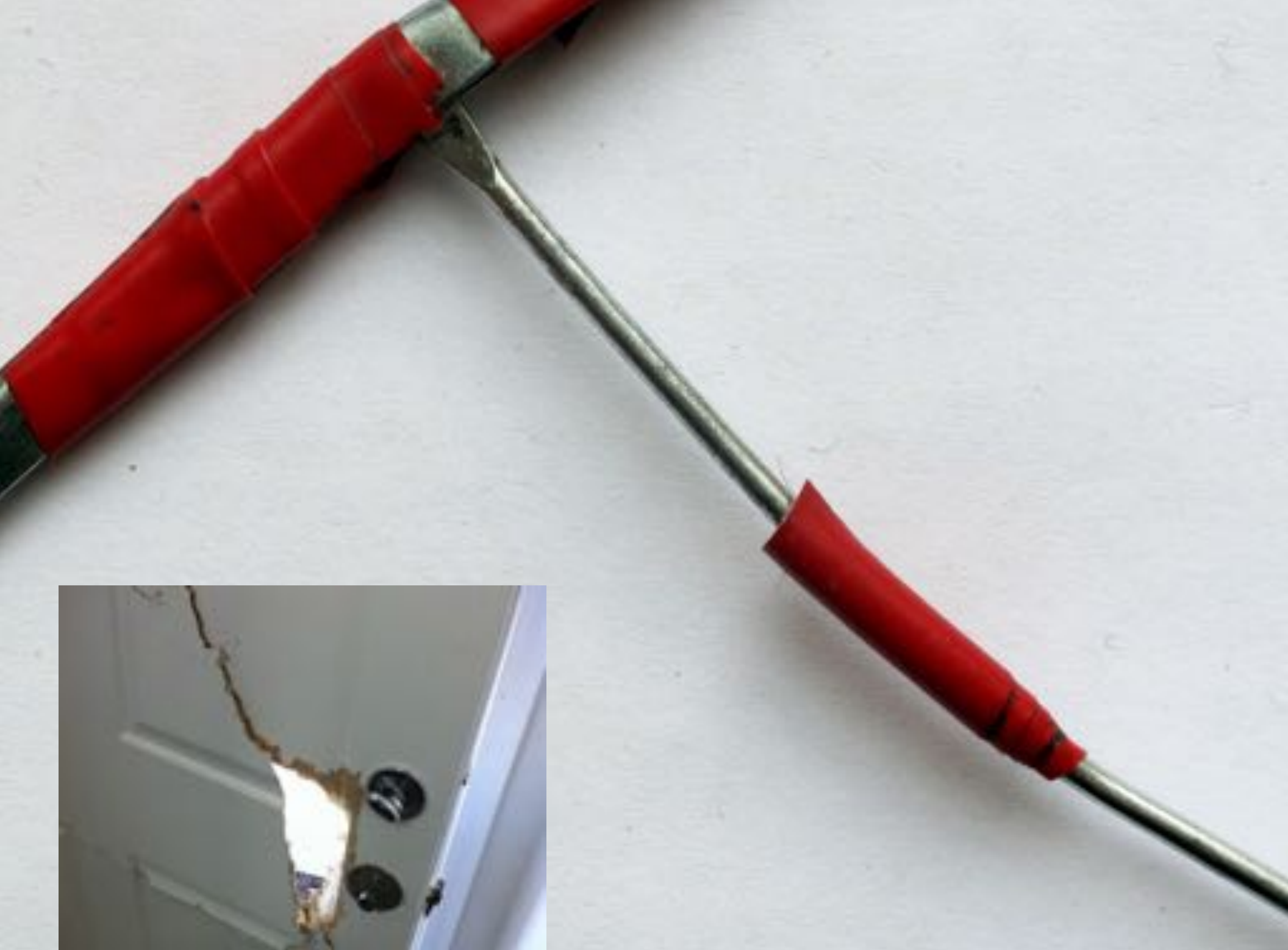










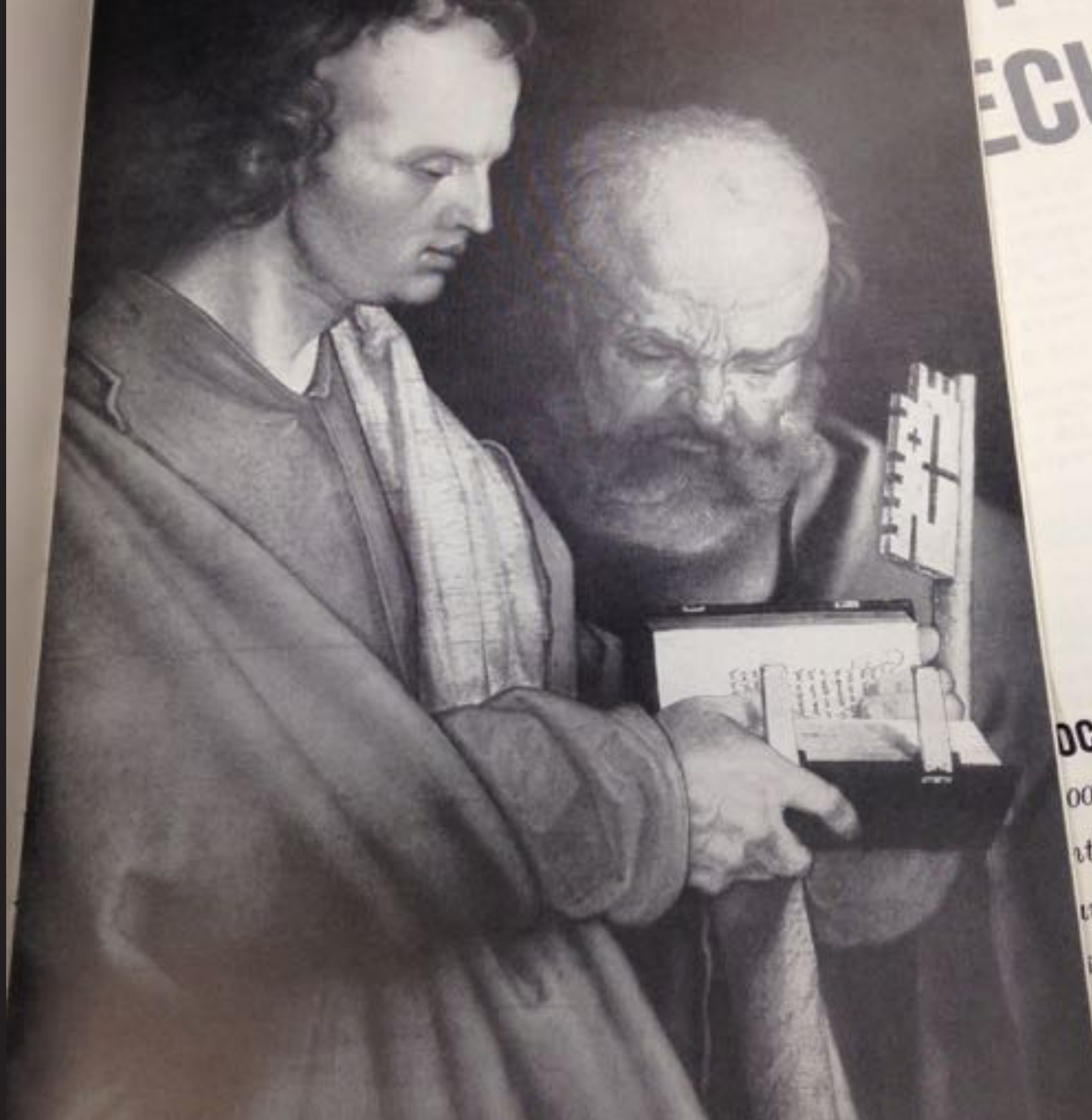
























It's powder so be careful











bolt.  
by a

the  
about

Pad Bolt. An alternative  
padlock bolt.  
Padlock Bolt. A door bolt which  
can be secured in the locked

against the bolt  
which swings outwards.



FIG. 80





















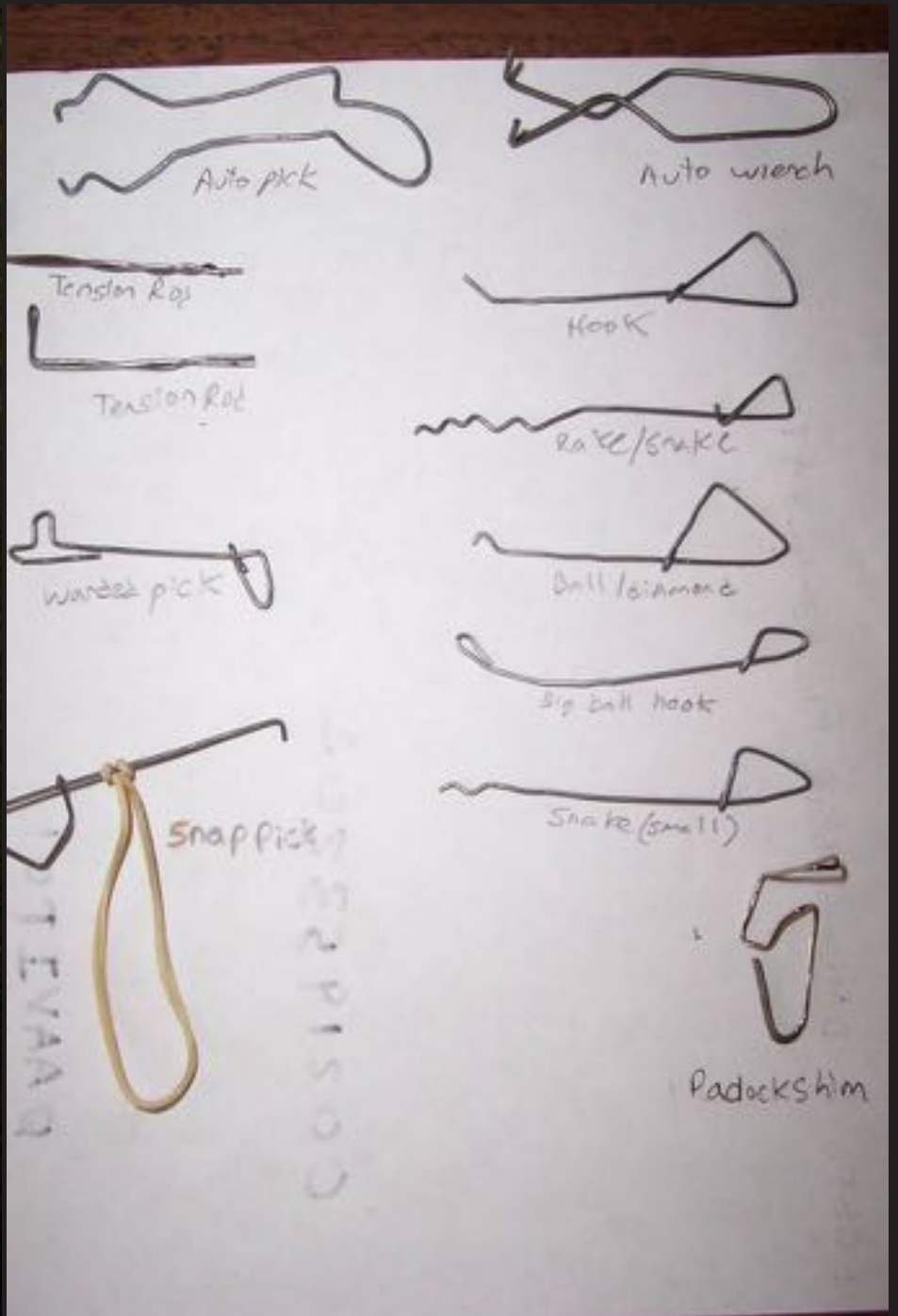






LOCATE  to LOCATE and HOLD  to HOLD







DANGER  
LOCK DISCHARGE  
INTERMITTENT  
TURBULENT WATER



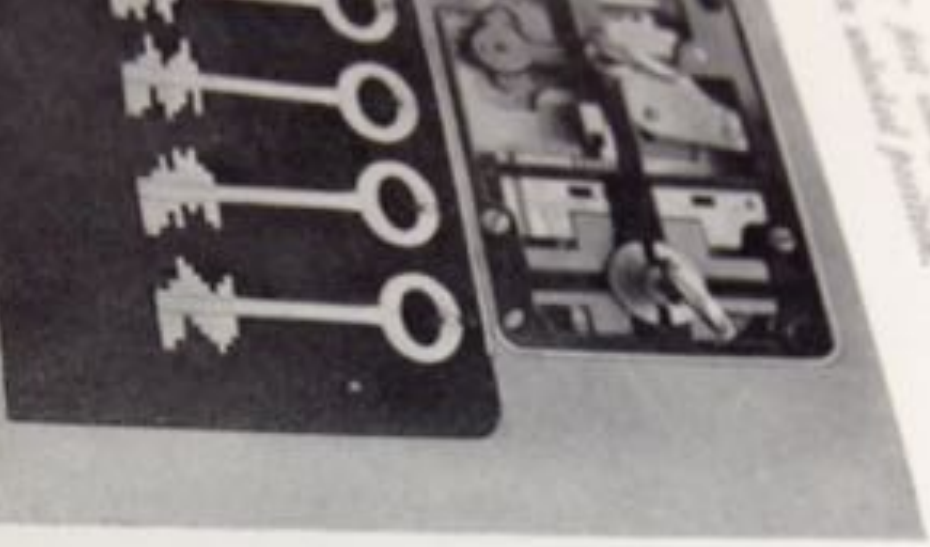
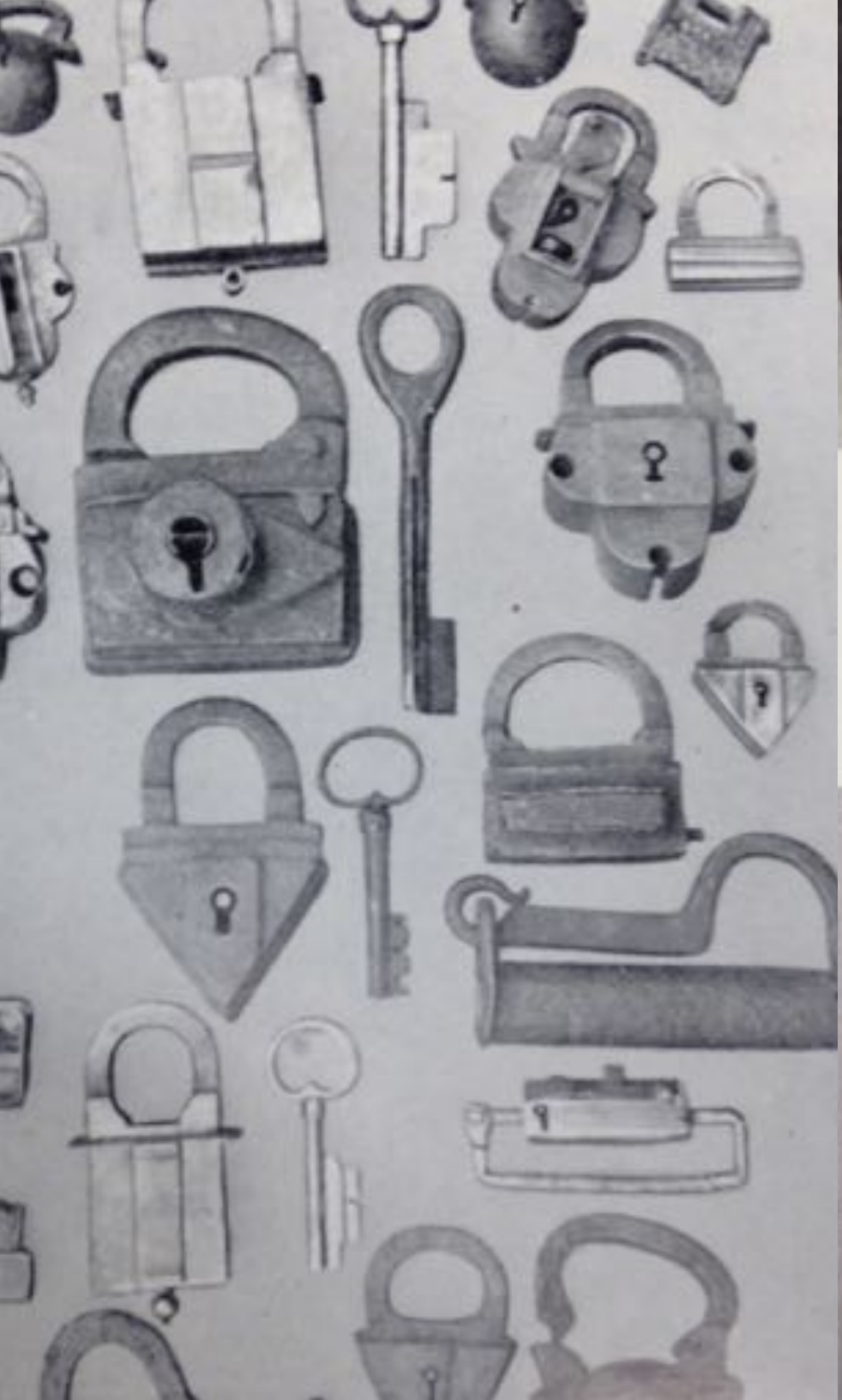




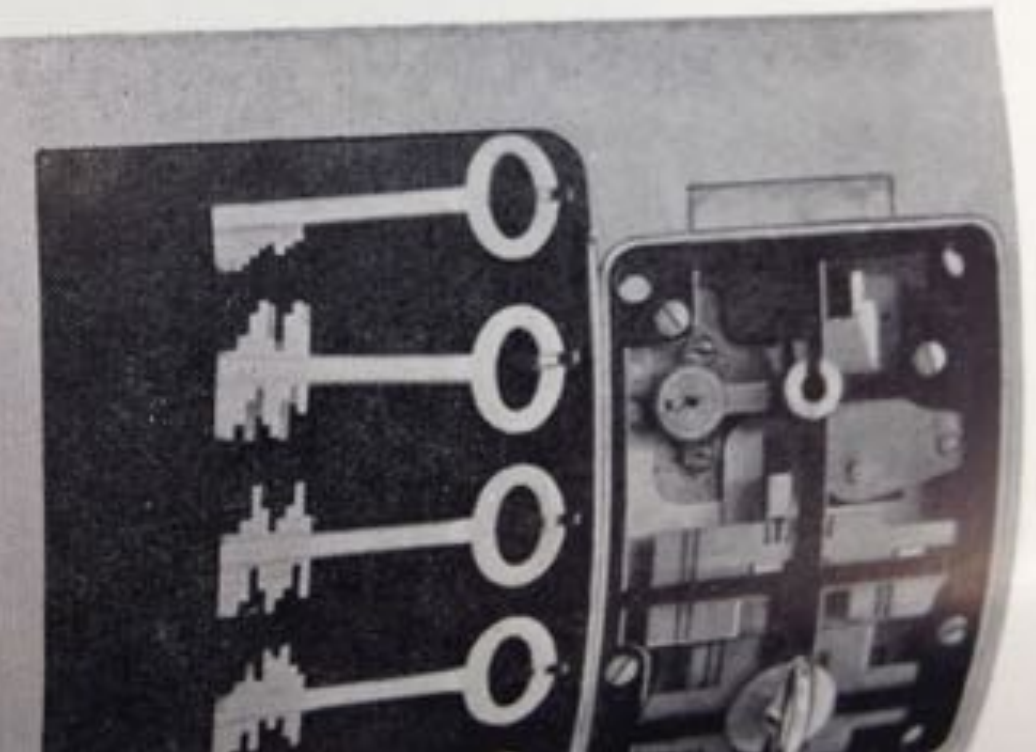








*Best burglar-proof box safe deposit  
in standard position.*



*deposit box lock in locked position.*



















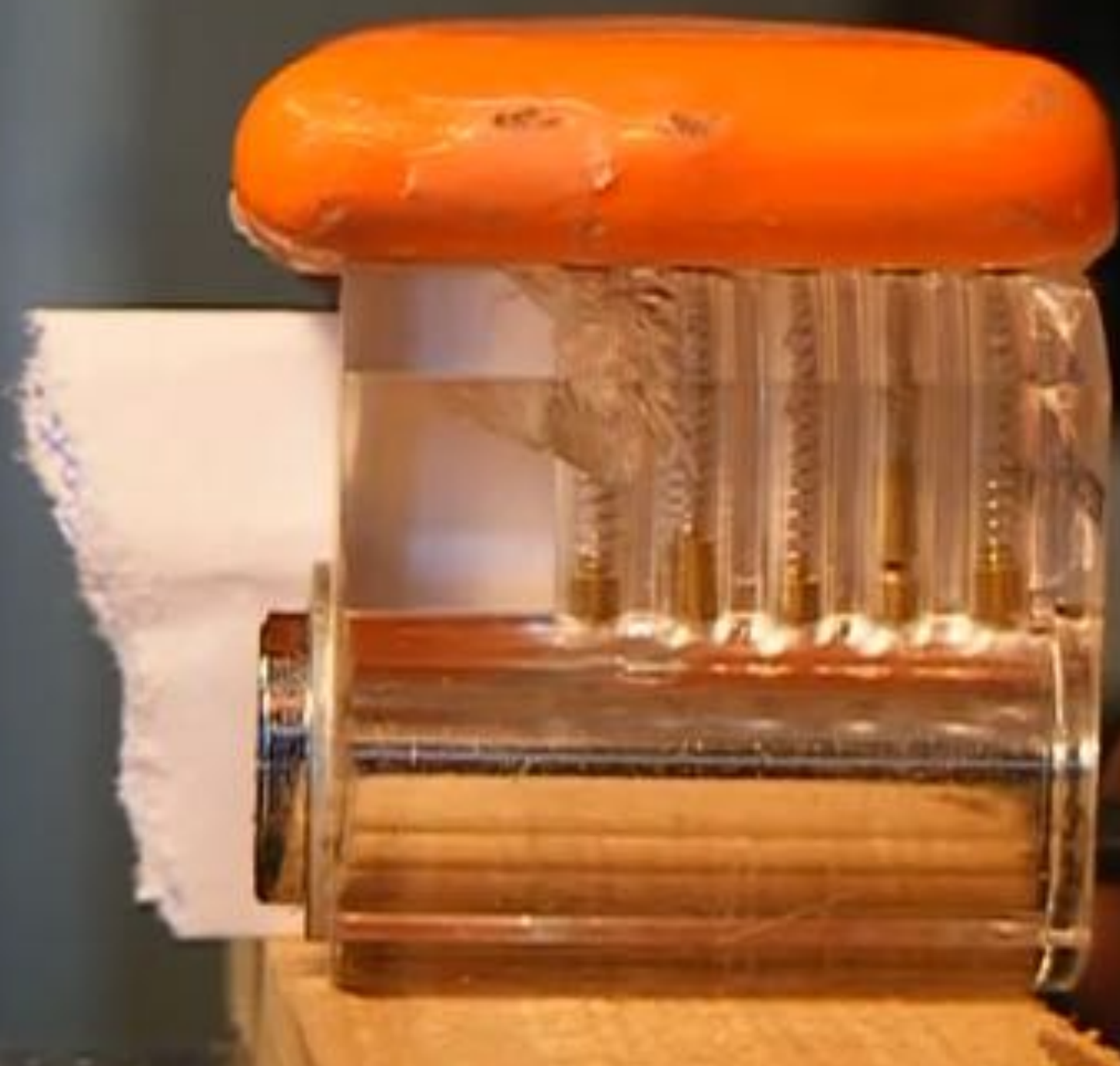


























































BPG-10



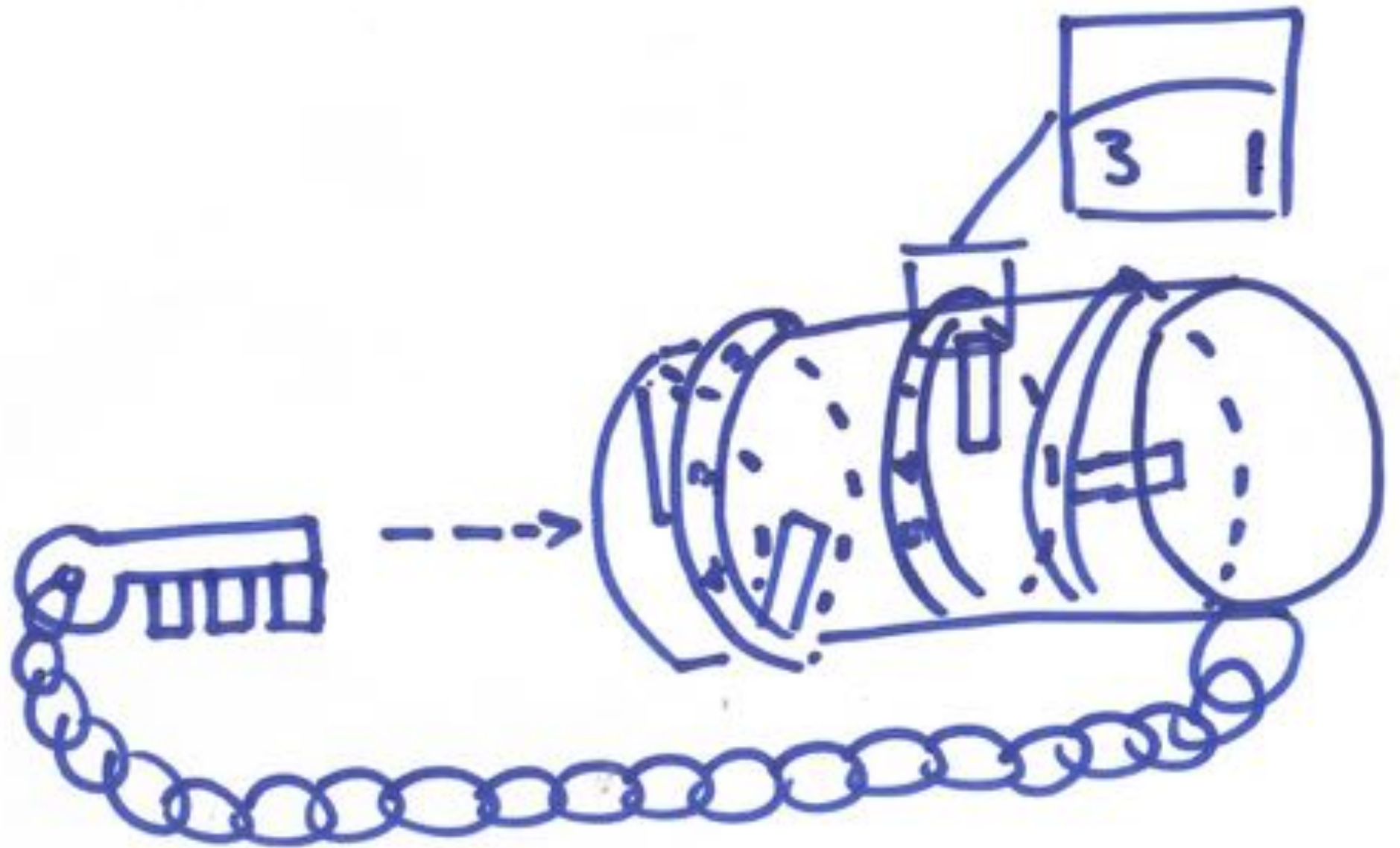


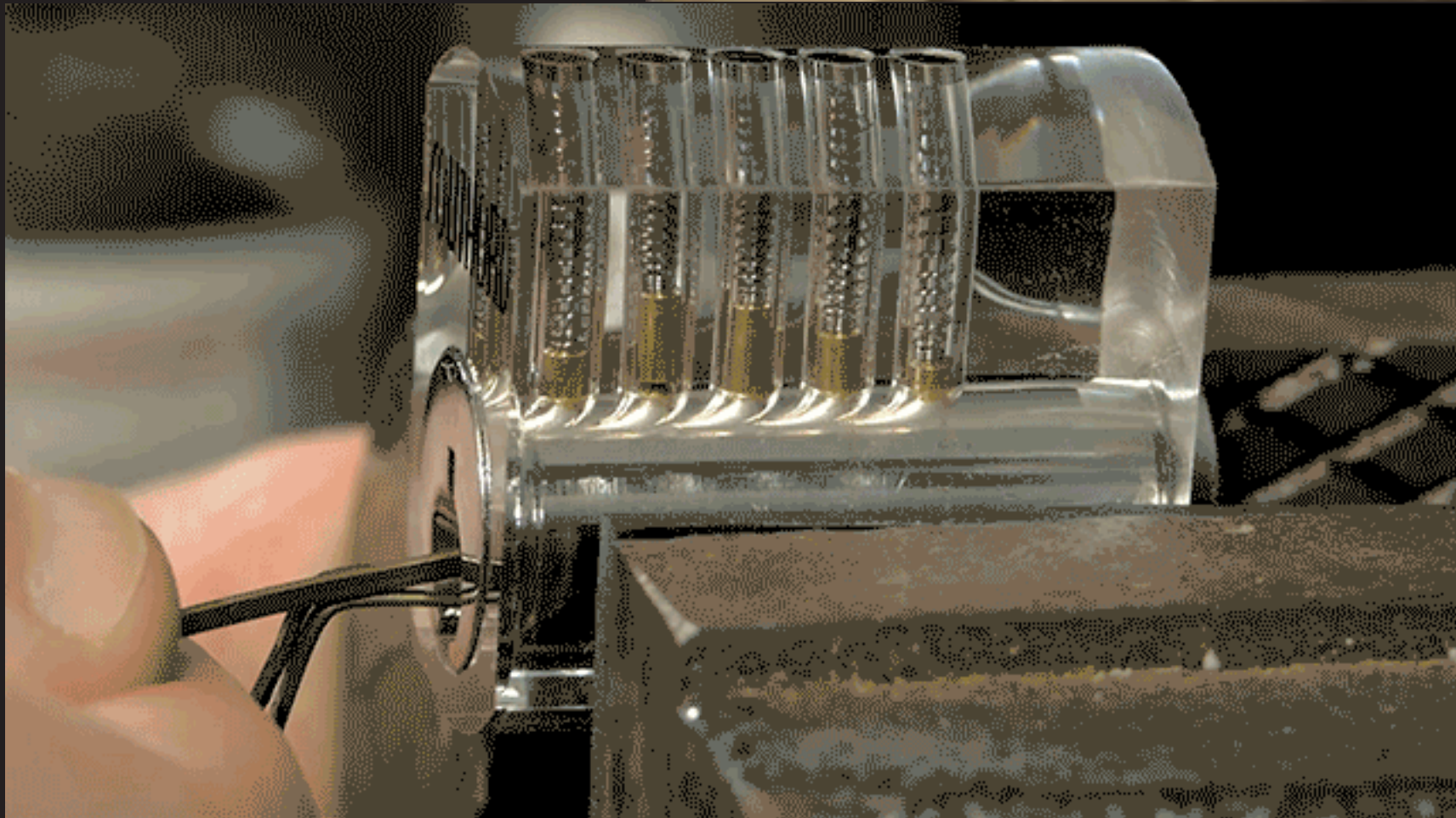








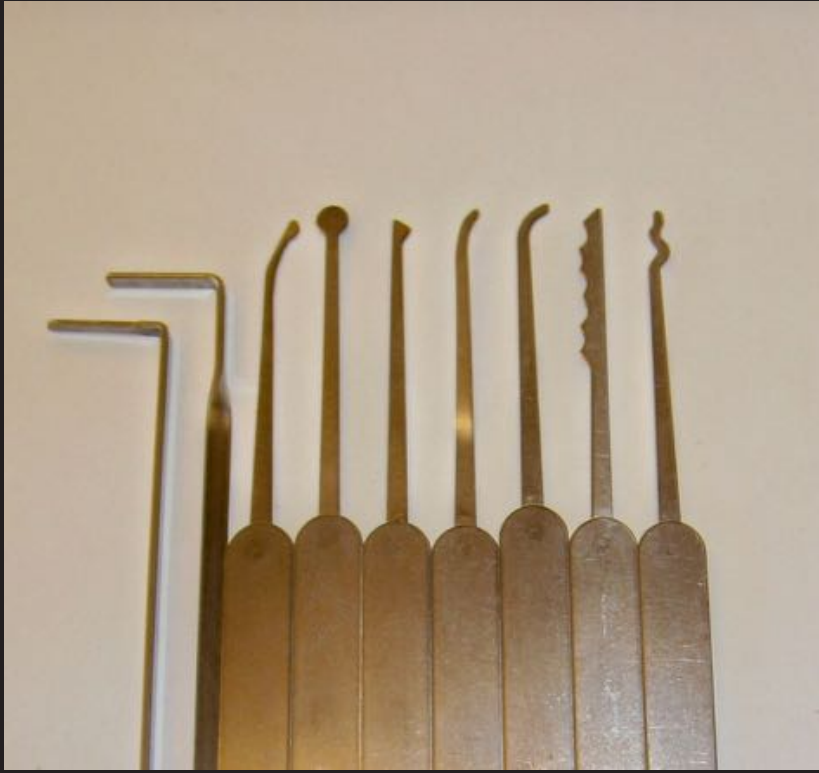














Please  
**BAG YOUR BOOKS**  
Before placing in the  
book return



# Book Sale!

Two Dates  
Saturday, July 23  
or  
Saturday, August 20  
Times: 10:00 - 2:00

Most books at special prices!

Open to all  
All ages welcome

Free Will Contribution

Rosa W. Henry Library  
Midway



## Little Ray's Reptile Zoo

MONDAY, JULY 25  
LAWRENCEVILLE, 11:00 - 12:00 PM  
DUBLIN, 1 - 2 PM  
MARIETTA, 3 - 4 PM  
FREE ADMISSION, PLEASE DONATE

Small illustrations of a lizard, a bird, and a turtle.

# Game

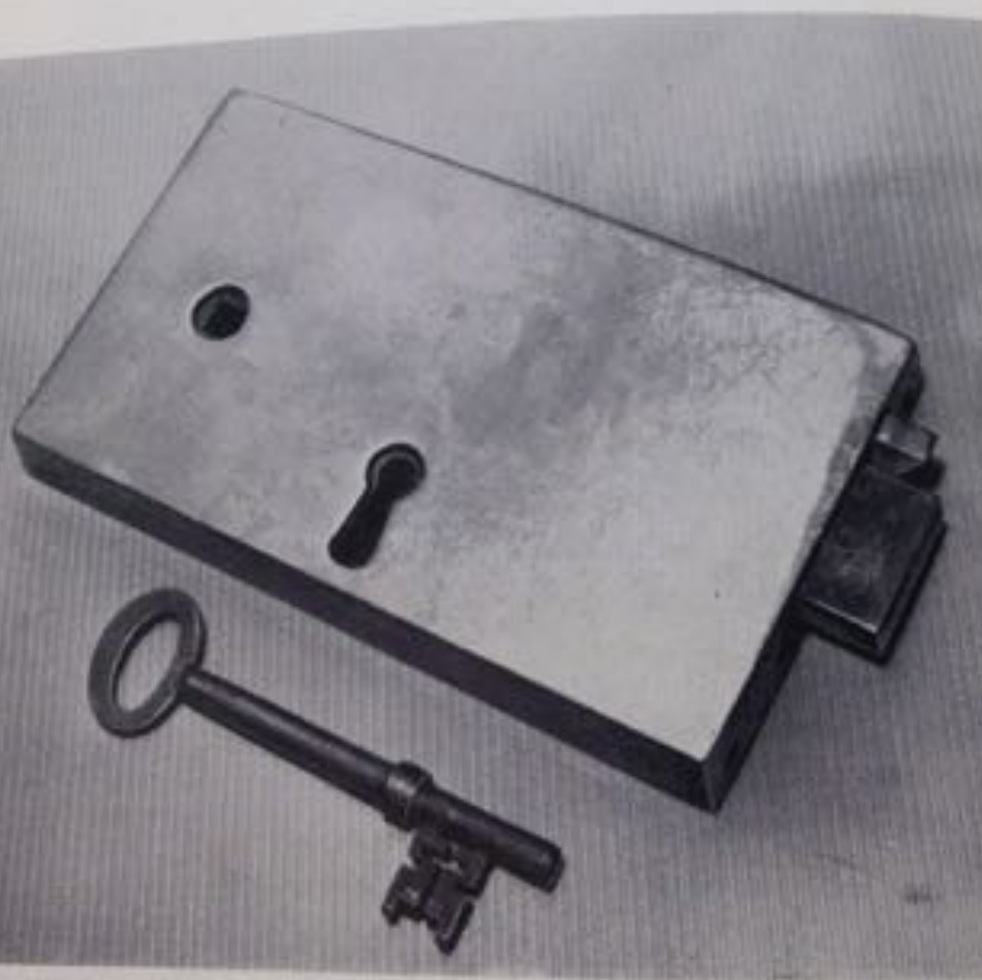
A large, colorful illustration of a group of children playing together in a park-like setting. Some are sitting on the grass, some are standing, and some are playing with toys.

Club

BOOK



...not if de...  
lower portion of the keyhole. There are thick brass  
side bushes at the keyhole. Probably 18th or early 19th  
ury.













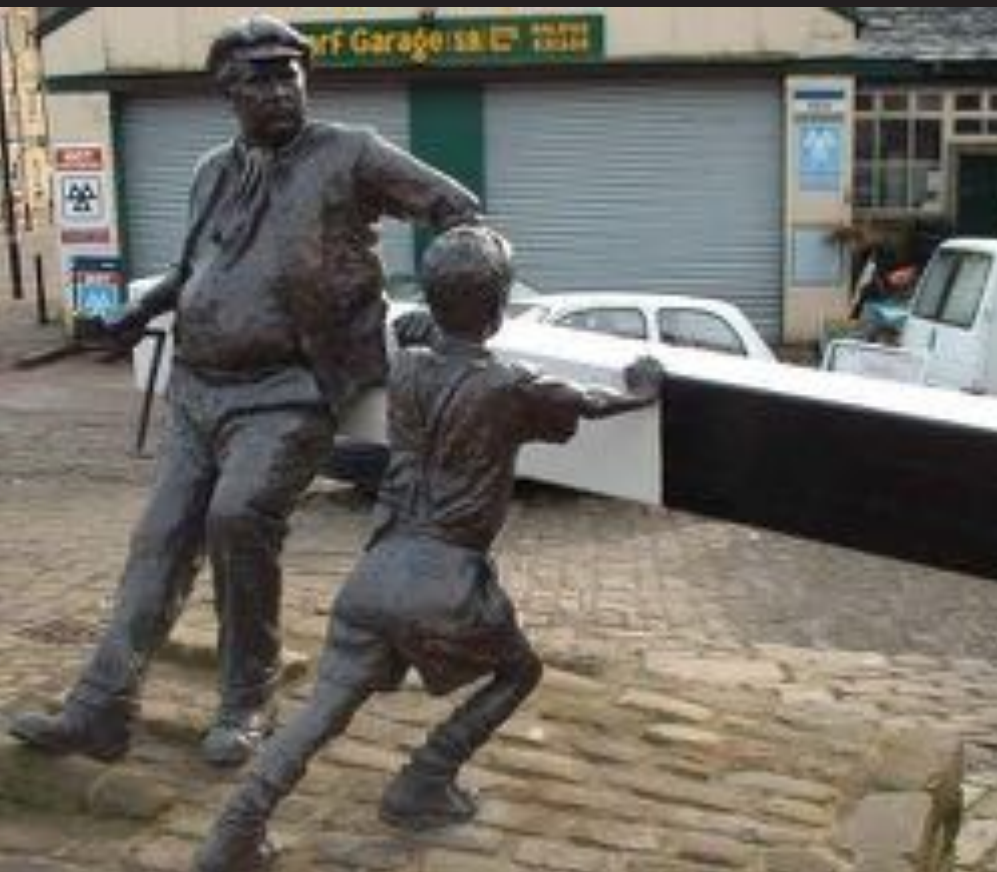



































14-20-38

Master Lock





Please  
leave red  
paddles  
open when  
leaving  
this lock









Sterling Silver

























































231

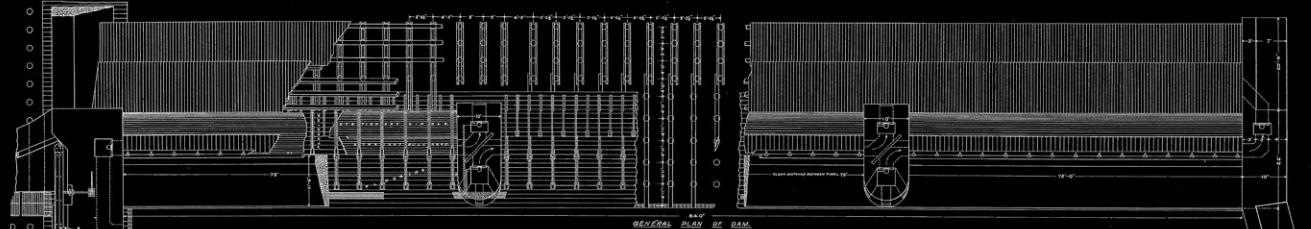




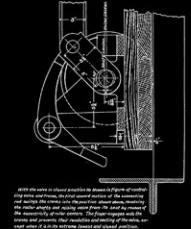




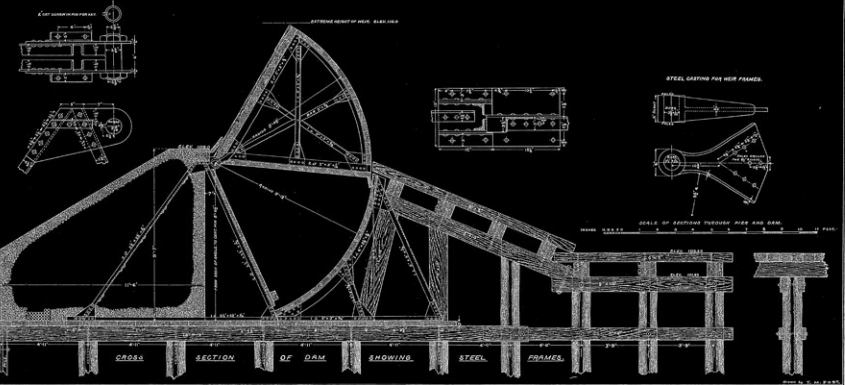
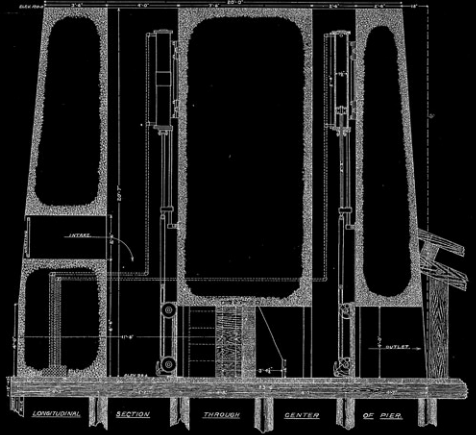
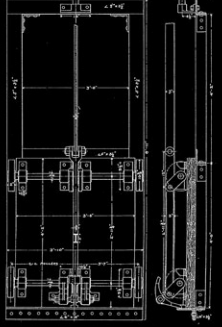




LOWER SUSPENSION BLOCK OF CONTROLLING VALVES



CONTROLLING VALVE AND FRAME















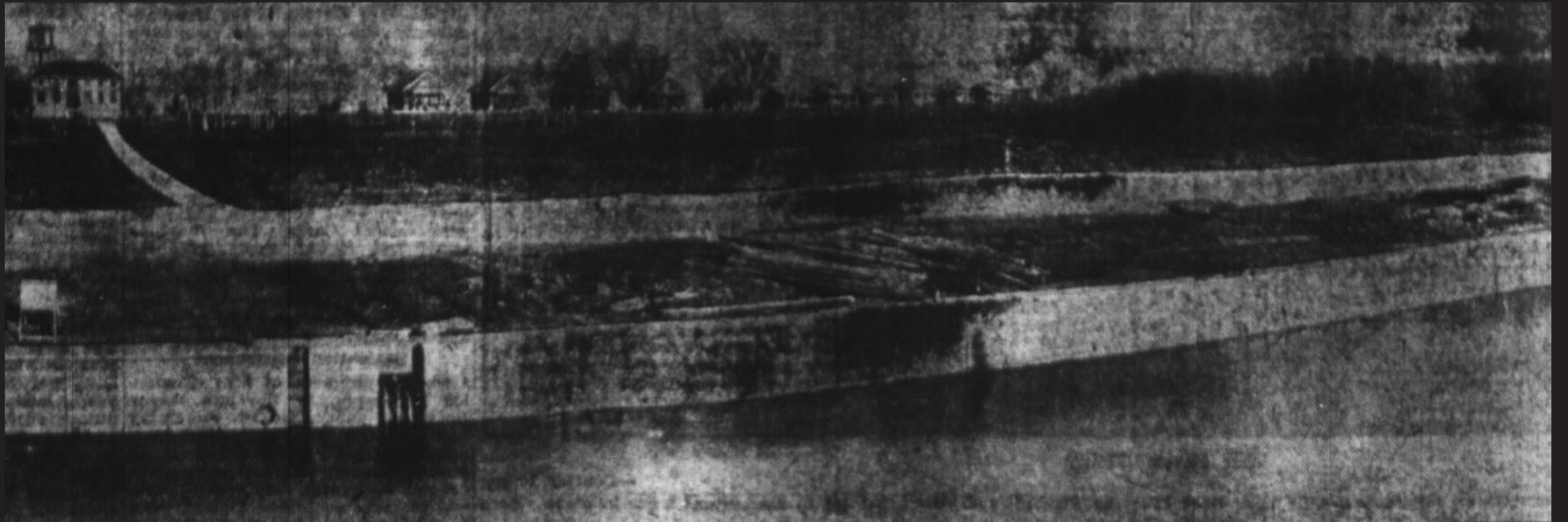




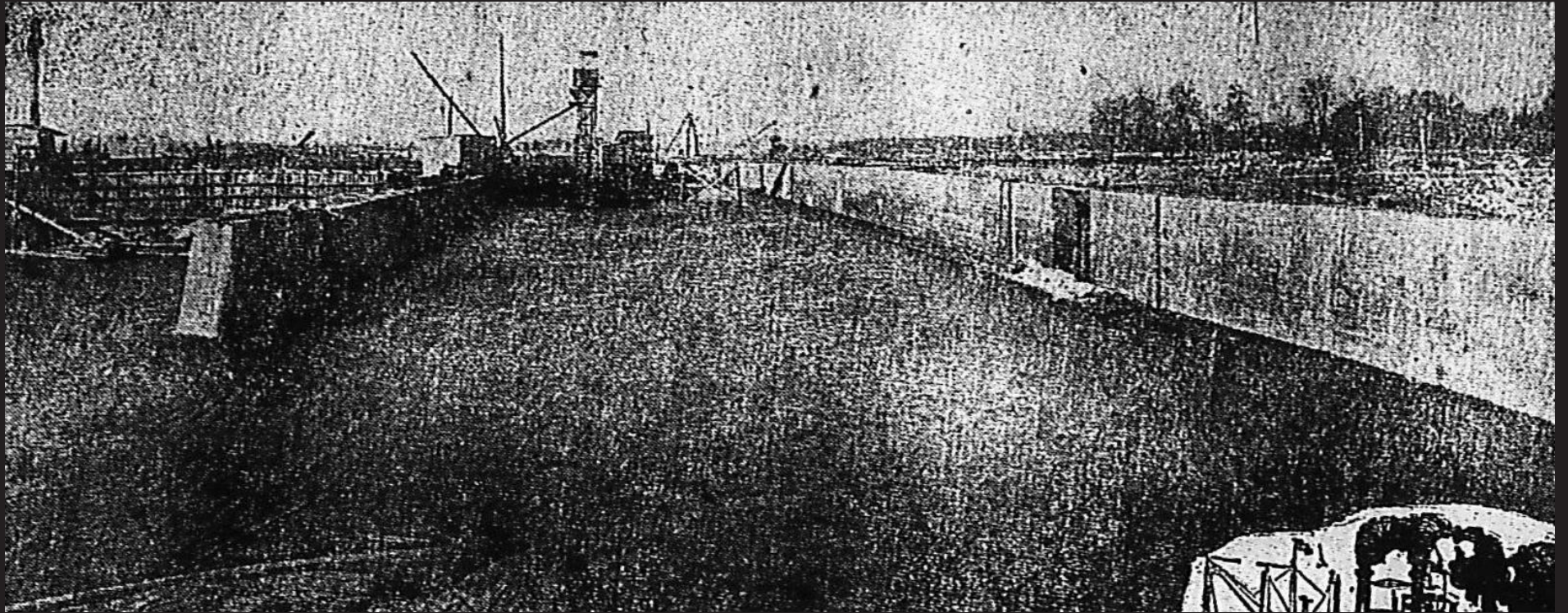
































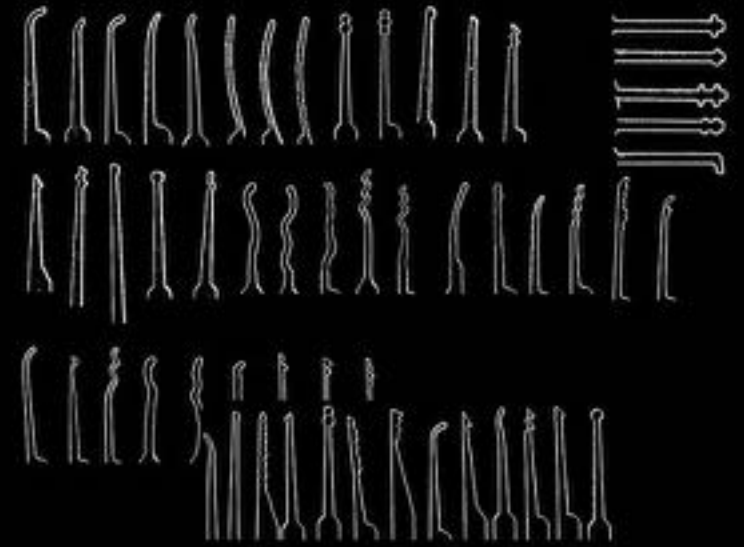




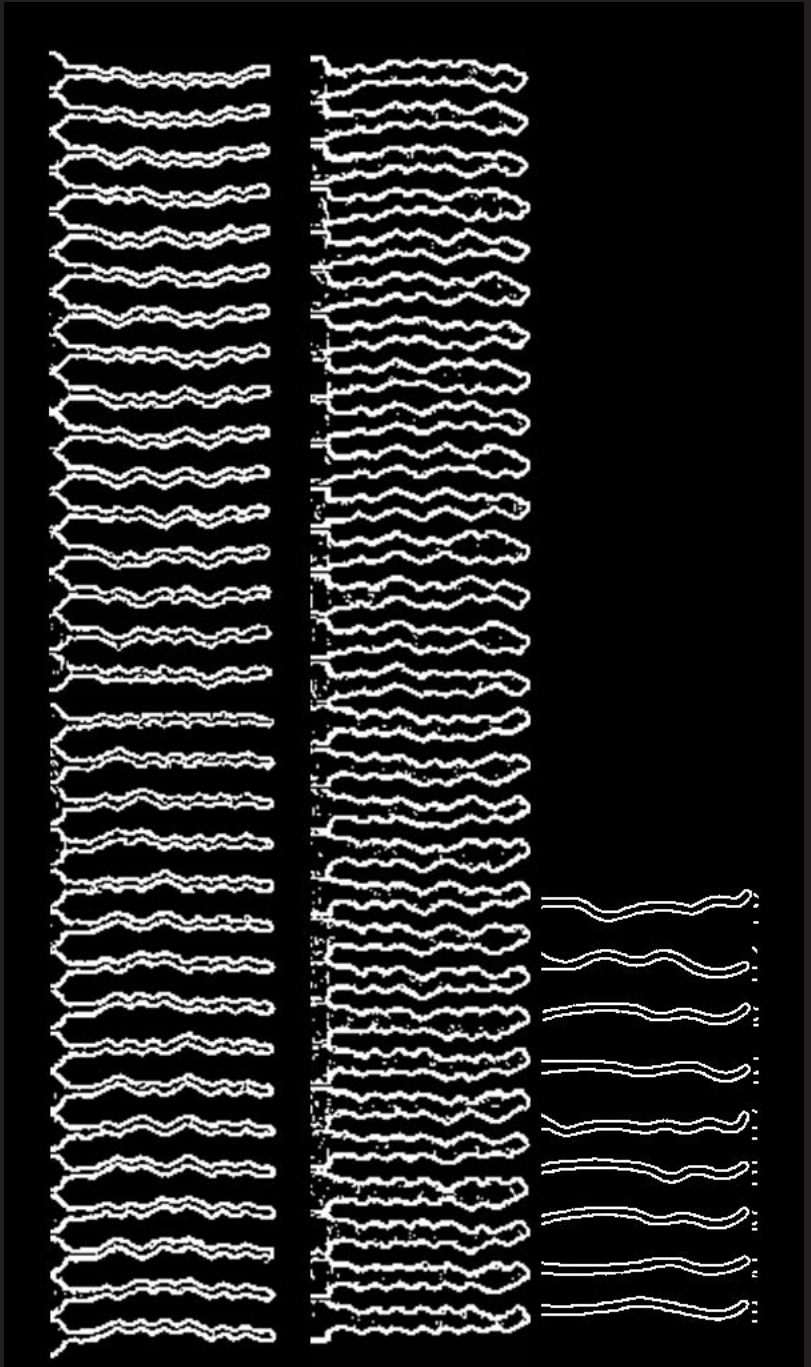


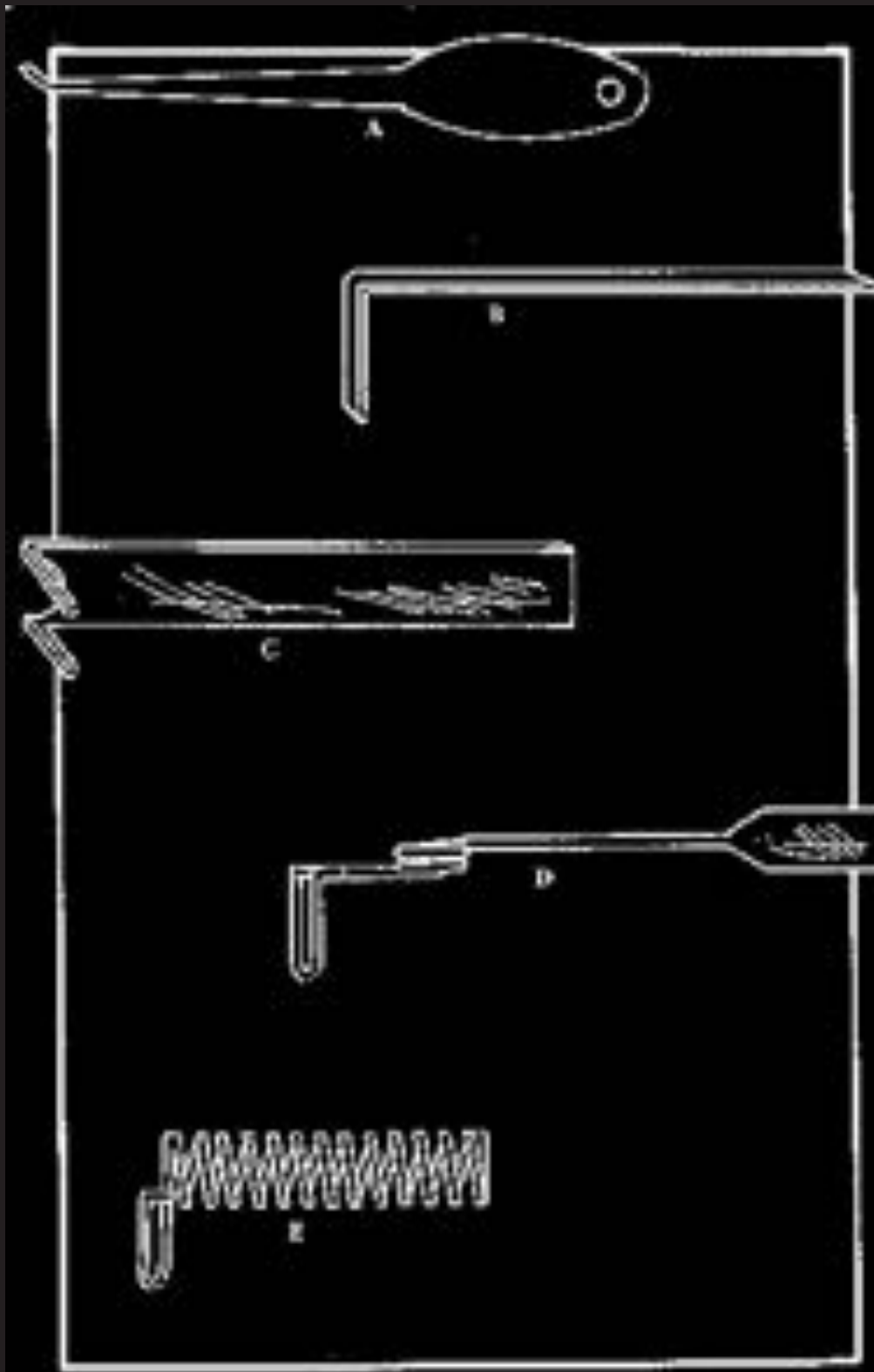




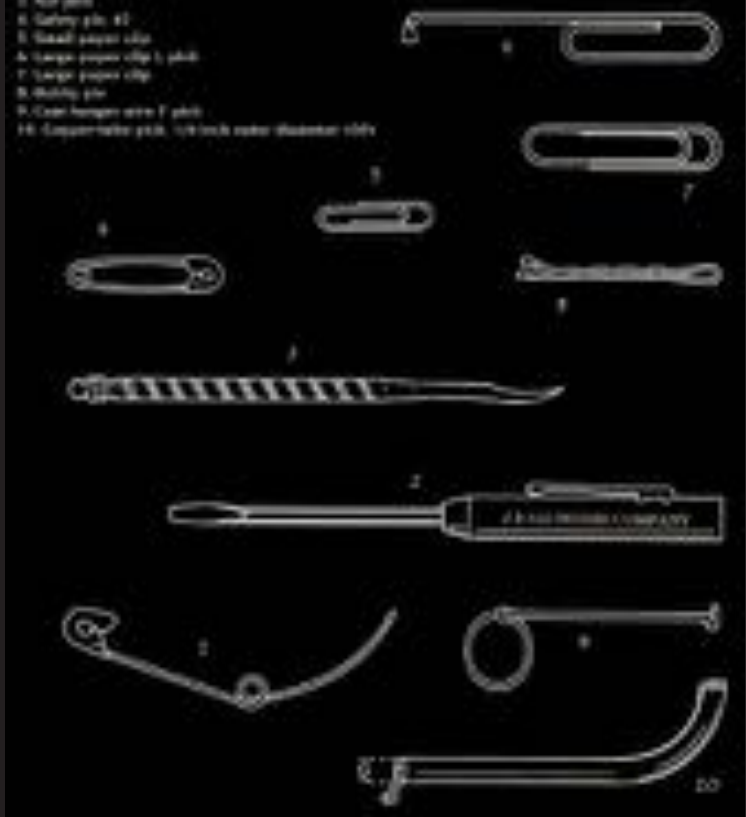




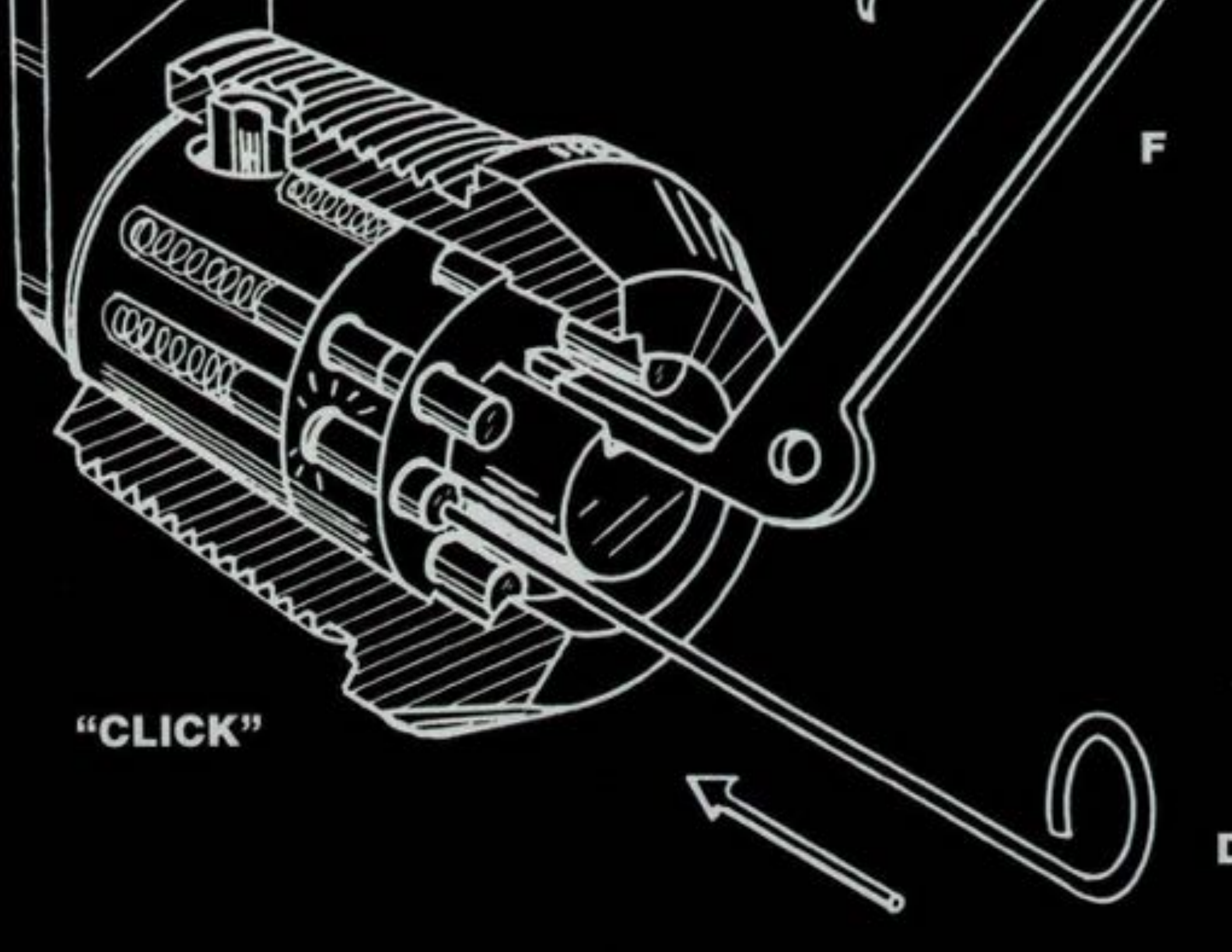




1. Safety pin, 16, "beak" pin
2. Pocket screwdriver
3. Nail pin
4. Safety pin, #2
5. Small paper clip
6. Large paper clip (1 pin)
7. Large paper clip
8. Mouth pin
9. Coat hanger wire (1 pin)
10. Copper tube pin, 1/4 inch outer diameter (1 pin)







F

**"CLICK"**

D

